

WHAT'S ON

JANUARY - MAY 2022



Box Office 01780 763203
www.stamfordartscentre.com



SOUTH
KESTEVEN
DISTRICT
COUNCIL

Welcome

We have a spectacularly eclectic season of live events ahead, with an array of music, theatre, comedy and a host of theatrical and live screenings.

Look out for our film screenings too to keep you entertained. You are all welcome to our regular Pint of Poetry events which happen on the last Wednesday of every month where Stamford poets (and budding poets) perform live stand-up poetry.

We are once again selling tickets for the new season of plays at Toilethorpe Hall - Romeo and Juliet, Hay Fever by Noel Coward, Spider's Web by Agatha Christie and some special performances of The Lord of the Flies by Toilethorpe Youth Drama.

2022 sees the return of our immensely popular Arts Around Town Days in February half-term in Stamford and across the district. Look out for more information online and on our social media pages.

Stamford Arts Centre's gallery is open daily Monday to Saturday showcasing the work of local artists so drop in for a coffee and browse.

On behalf of the Arts Centre staff, we look forward to seeing you soon.

Rosemary Trollope-Bellew
Cabinet Member for Culture and Visitor Economy at SKDC



Book online at: www.stamfordartscentre.com

Booking Information

Information

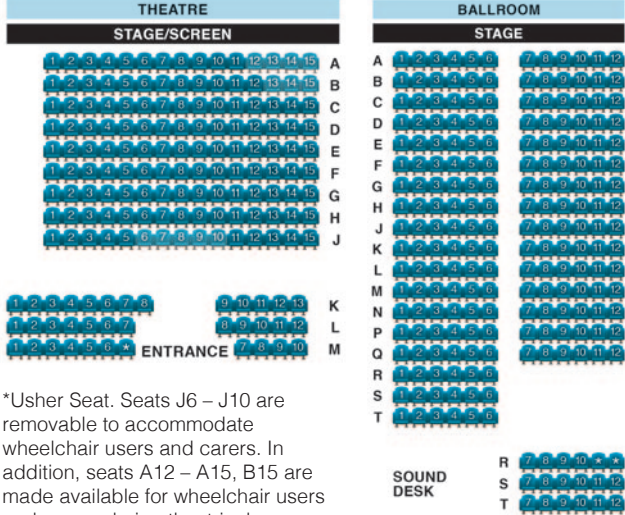
Find us



Parking is available at Wharf Road, Cattle Market, Bath Row and St Leonard's Street car parks. All are free after 6pm.

There is parking for disabled badge holders close to the Arts Centre in St Mary's Street and St George's Square.

Seating plans



*Usher Seat. Seats J6 – J10 are removable to accommodate wheelchair users and carers. In addition, seats A12 – A15, B15 are made available for wheelchair users and carers during theatrical screenings and films.

Seat K13 is reserved for an usher during live theatre performances.

Please note, the Theatre has a raked seating format, and the Ballroom seating is at one level.

Tickets

Reception is open Monday to Saturday from 10am to 2pm to buy tickets, and an hour before all live shows and films. You can book online at www.stamfordartscentre.com outside of these times.

All tickets can now be sent as E-Tickets! In order to reduce our carbon footprint and have a safe and contactless booking/entry system, this is now the preferred way of issuing tickets. Tickets are sent via email as a PDF and are just shown on your smart phone as you enter the theatre – no need to print!

Sign Up to our Digital Mailing List

We are moving more towards digital communication in an attempt to cut down on our printing and paper usage.

Please contact the box office if you would like to sign up to receive the brochure via email moving forwards.

Discounts

Discounts (priced in brackets) vary from show to show. Generally, they are available to children and students, the unwaged, over 60s, disabled patrons and their companion.

Refunds

We regret that we are unable to give cash refunds. If an event is sold out, we will try to resell unwanted tickets. An administration fee of £1 per transaction is charged for this service. If your tickets are sold on, we will credit your account for you to use against a future purchase.

Gift Vouchers

You can buy a gift voucher for any amount you require online and from reception.

Access

The ballroom, gallery, reception and coffee shop are all on the ground floor and easily accessible. The Art Room, Rehearsal, Burley and Exeter Rooms are on the first floor.

There is a platform lift to the theatre with two spaces for wheelchairs. Please let reception know in advance if you wish to reserve a wheelchair space and if you require an adjoining seat for a companion.

The theatre has an induction loop; hearing aids should be switched to the T position. Toilet facilities are available close to both the theatre and the Ballroom. Parking for disabled badge holders is available in St Mary's Street and St George's Square.

CEA Card

The Card enables a disabled patron to receive a complimentary ticket for someone to go with them when they visit cinema screenings and selected live shows. Please see website for terms and conditions.

Children

We have baby changing facilities on the ground floor. Under 12s must be accompanied by an adult in the Theatre/Ballroom. A limited amount of babes in arms tickets are available for £1 on selected family shows for children under 2 years old. We reserve the right to alter or amend this allocation without notice.

Food and Drink

The Coffee Shop is open Mon – Sat, 9.30am – 4pm for a range of food and drinks. Hot and cold drinks, ice creams and sweets are on sale at our kiosk before each show or screening. The Gallery Bar is open for live shows and satellite screenings.

Hire the Venue

From the magnificent ballroom to the light art room or a meeting room we have a variety of rooms to suit. Visit our website or contact Graham Burley on g.burley@southkesteven.gov.uk. The management reserves the right to change the programme if necessary, without notice.



Supported using public funding by
**ARTS COUNCIL
ENGLAND**

@stamfordarts
Stamford Arts Centre
@stamfordarts

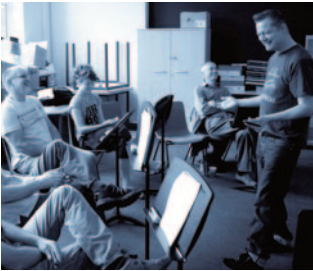


Book online at: www.stamfordartscentre.com



FRI 7 JAN 10.15AM, 1.15 PM, 6.30 PM
SAT 8 JAN 11AM, 2.30PM & 6.30PM
SUN 9 JAN 11AM, 2.30PM & 6.30PM
SAT 15 JAN 11AM, 2.30PM & 6.30PM
SUN 16 JAN 11AM & 2.30PM

CINDERELLA
Polka Dot Pantomimes present CINDERELLA, the family pantomime where dreams come true.
£15 (£14) Family of four
£50 | Schools £7.50 | Groups of 10+ £12



SAT 8 JAN | 5 FEB | 5 MAR |
2 APR 12NOON – 3.30PM

HARMONICA WORKSHOPS
Harmonica phenomenon Steve Lockwood presents a workshop for harmonica players of all abilities including complete beginners.
£40



FRI 25 FEB 7.30PM

JACQUI DANKWORTH & CHARLIE WOOD - JUST YOU, JUST ME
Multi award winning vocalist, Jacqui Dankworth, is joined by acclaimed American pianist-vocalist, Charlie Wood for a unique concert of duets celebrating a century of song.
£25 (£23)



SAT 26 FEB 7.30PM

STAMFORD INTERNATIONAL MUSIC FESTIVAL
Stamford International Music Festival is back with a programme to include: Haydn – String Quartet Op.76 No.5 in D | Dvořák – String Quintet No. 2 in G, Op. 77
£18 (£6 under 26s)



FRI 7 JAN 7.30PM

SALMANAZAR - NEW YEAR'S FRENCH BAL
7.30pm Workshop - 8.30 pm Bal
Cédric Martin, tireless virtuoso of the diatonic accordion, is returning by popular demand for the 13th year.
£9 (£7)



SAT 8 JAN 7.30PM

PAUL LEWIS – PIANO
A programme of Beethoven, Sibelius, Chopin and Debussy from one of the UK's leading pianists of his generation.
£20 (£18)



FRI 4 MAR 8PM

PINT OF COMEDY
Four terrific comics and one slightly grumpy compere are back to brighten up your winter evenings. Starring Jonathan Elston
£10 (£8)



SAT 5 MAR 7.30PM

LONDON SERENATA - POT POURRI EUROPA
Music by Mozart, Ibert, Rossini, Ligeti and Arnold from Stamford favourites London Serenata. Hear them live in the superb acoustic of the Ballroom.
£20 (£18)



FRI 21 JAN | 18 FEB |
25 MAR | 22 APR 7PM

STAMFORD GROOVE - SEN DISCO
An exciting, fun-filled night for adults with disabilities aged 16+, their families and support workers.
£3.50 / Support Worker free



SAT 22 JAN 7.30PM

STAMFORD CHAMBER ORCHESTRA
A String Serenade - including Elgar's sublime Serenade and Grieg's joyful Holberg Suite. An evening to be treasured.
£12.50 (£10.50) £5 under 26s



TUE 8 TO SAT 12 MARCH
7.45PM

I AM A CAMERA STAMFORD SHOESTRING THEATRE
Christopher Isherwood's novel 'Goodbye to Berlin' is brought to vivid, moving, and satirical life in this play on which the musical 'Cabaret' was based. **£12 (£10)**



FRI 11 MAR 8PM

HARLEY KIMBRO LEWIS
From Knoxville to Nashville via Hertfordshire, Martin Harley, Daniel Kimbro & Sam Lewis collaborate for the first time on a slow cooked, laid-back album reminiscent of an early American songbook.
£18.50



WED 26 JAN 8PM

IN VINO VERSES: PINT OF POETRY SPECIAL
A celebration of the very special relationship between alcohol and poetry! Wine and spirits available to purchase in our Gallery Bar. Non alcoholic options available...rumours of cheese too! (Wine and Cheesy Verses!)



THU 27 JAN 7PM

LEOPOLDSTADT - NT LIVE 12A
Filmed live on stage in London's West End, 'Tom Stoppard's masterpiece is magnificent' (Independent) and should not be missed.
£15 (£13) £10 for under 26s



THU 17 MAR 7.30PM

ROWAN RHEINGANS DISPATCHES ON THE RED DRESS
Dispatches on the Red Dress is an intimate and courageous new solo show by twice BBC Radio 2 Folk Award winning songwriter Rowan Rheingans.
£16 (£15)



SAT 19 MAR 10AM TO 4PM

PBFA BOOK FAIR
Antiquarian and second-hand Book Fair bringing exhibitors who specialise in rare and vintage books to Stamford.



FRI 28 JAN 7.30PM

SWING 'N' SINATRA
Five Star Swing presents a journey through the decades of this unforgettable genre, from the Tommy Dorsey band to Hollywood and from Vegas 'Rat Pack' to recordings with the Count Basie band.
£23 (£21.50)



SAT 29 JAN 8.30PM

DISCO FOR GROWN UPS
Pop-up 70s and 80s Disco Party is coming back to Stamford! Get ready to boogie the night away at the beautiful ballroom. Over 18s only. Doors open 7.30pm, dancing from 8.30pm to midnight.
£14



WED 23 MAR 7.30PM

KATHRYN ROBERTS AND SEAN LAKEMAN
Popular wife and husband duo Kathryn Roberts and Sean Lakeman have long established themselves as one of the UK folk scene's most rewardingly enduring partnerships.
£18 (£16)



THURS 24 MAR 7PM

HEX - NT LIVE
A vividly original retelling of Sleeping Beauty, a mythic, big-hearted new musical that goes beyond the waking kiss. Deep in the wood, a lonely fairy longs for someone to bless. Book by Tanya Ronder, music by Jim Fortune and lyrics by Rufus Norris. Ages 8+
£15 (£13) £10 for under 26s



SAT 29 JAN 7.30PM

CHÂTEAU GHOUL LIPSERVICE THEATRE
Lip Service combine live on-stage hilarity with stunning digital projections to create a multimedia haunted house thriller.
£16 (£15)



THU 3 FEB 7.30PM

POSTING LETTERS TO THE MOON
An evening of wartime letters between the actress Celia Johnson and her husband Peter Fleming read by their daughter, Lucy Fleming, with Simon Williams. Presented by Clive Conway.
£20 (£18)



FRI 1 APR 8PM

POLICE DOG HOGAN
'Brilliant' song-writing and 'sensational' harmonies, are just a few of the accolades gathered by this band at their 'now-legendary' live gigs. The 7-piece outfit stars the Guardian's Tim Dowling.
£18 (£16)



TUES 5 APR 7PM

EASTER IN ART EXHIBITION ON SCREEN
This beautifully crafted film explores the Easter story as depicted in art, from the time of the early Christians to the present day.
£15 (£13) Under 26s £10



FRI 4 FEB 8PM

JAZZ IN THE THEATRE MATT RATCLIFFE TRIO
Matt Ratcliffe and his Trio bring a set of reimagined and arranged pieces from the Beatles Songbook. Featuring vocalist Helen Gayle.
£12 (£10)



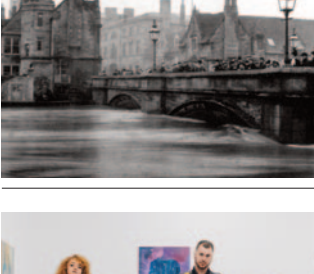
SAT 5 FEB 8PM

PINT OF COMEDY
Four terrific comics and one slightly grumpy compere are back to brighten up your winter evenings. Starring Duncan Oakley.
£10 (£8)



WED 6 APR 2.30PM

PEBBLE ON THE BEACH M6 THEATRE COMPANY
Welcome to Sandyway Bay! Featuring a lively mix of dancing, singing and puppetry, Pebble on the Beach will magically transport you to a day at the seaside. **Age 3+ £10 (£8) Family ticket £30**



THU 7 APRIL 7.30PM

PHILIPPA MASSEY HISTORY TALK WATER, WATER – EVERYWHERE?
Philippa investigates how the town has managed to obtain this essential liquid, from river, spring, well and pump, to our modern water mains. **£6 (£5.50)**



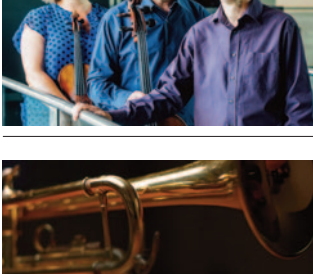
SAT 5 FEB 7.30PM

DORIC STRING QUARTET
The second concert in our series examining the string quartets of Beethoven against contrasting and complementary quartets by composers influenced by him.
£20 (£18)



FRI 11 FEB 7.30PM

KING PLEASURE AND THE BISCUIT BOYS
King Pleasure & The Biscuit Boys are more than just the world's greatest jump, jive and swing band – they're an institution!
£18 (£16)



SAT 23 APRIL 7.30PM

STAMFORD BRASS
The award-winning Stamford Brass return to the Arts Centre for the first time since 2019, with a concert of music created to stimulate & entertain.
£11 (£6 for under 26s)



FRI 29 APR 8PM

JAZZ IN THE THEATRE HUGH PASCALL QUARTET
An evening of jazz from this outstanding trumpeter and his band. "An outstanding soloist" – London Jazz News
£12 (£10)



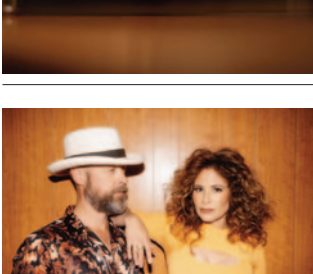
SAT 12 FEB 2.30PM

PINOCCHIO - NORWICH PUPPET THEATRE
A playful story exploring what it means to love - with slapstick humour and a very big fish! This highly visual production features puppetry, illusion and an atmospheric soundtrack.
Age 4+ 60 minutes £10 (£8) Family ticket £30



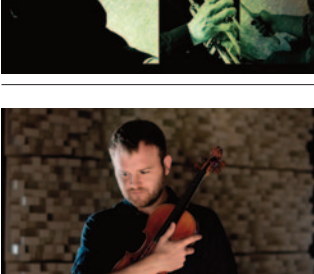
TUE 15 FEB 7.30PM

PHILIPPA MASSEY HISTORY TALK A HISTORY OF STAMFORD COMMUNICATIONS
A fascinating talk on the various conditions that became available as technology created new and different ways of passing information.
£6 (£5.50)



SAT 30 APR 7.30PM

THE GRAHAMS
The Grahams are husband Doug and wife Alyssa Graham, a dynamic Americana-Folk duo from Nashville. This tour is a multi-media performance with a documentary film 'Searching The Milky Way,' before 60-75 minutes of live music. **£13**



FRI 6 MAY 7.30PM

SAM SWEENEY
Sam is a veteran of the mighty Bellowhead, founder member of the acclaimed instrumental trio Leveret, and a superb instrumentalist at the forefront of the revival in English traditional music.
£18 (£16)



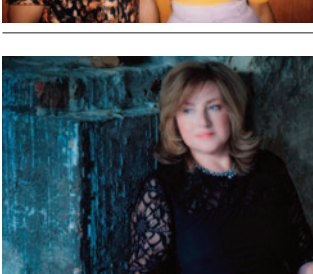
THU 17 FEB 7PM

THE BOOK OF DUST – LA BELLE SAUVAGE NT LIVE
Screened live from London's Bridge Theatre to Stamford, by Philip Pullman, adapted by Bryony Lavery directed by Nicholas Hytner.
£15 (£13) £10 for under 26s



FRI 18 FEB 11AM - 3PM

ARTS AROUND TOWN
Enjoy a splendid array of family activities right across the town. Low cost or free activities. Check our social media and website pages for full details.



SAT 7 MAY 7.30PM

LUCY PARHAM I, CLARA
I Clara explores the life of composer and concert pianist, Clara Schumann. Lucy Parham performs works by Clara with readings by Harriet Walter from her letters and diaries.
£20 (£18)



WORKSHOPS AND EXHIBITIONS

Why not join one of the many creative classes and workshops – check our website for details. Check out our regularly changing gallery exhibition whilst you are in the building there is always something wonderful to see. Open 10am to 8pm Monday to Saturday.